

# We're working in your area

ID: 20211  
Wednesday 11 March 2020

## Transport projects in St Albans, Edgeware and Mairehau

<b>What</b>	Potholing to locate services
<b>Where</b>	Innes Road, east of Philpotts Road
<b>When</b>	Friday 13 March 2020 for one day, subject to weather
<b>Contact</b>	Fulton Hogan on 0800 7623 34 (0800 ROAD FH) (Mon - Fri, 8am - 5pm) or email <a href="mailto:cant.info@fultonhogan.com">cant.info@fultonhogan.com</a> . After business hours, please feel free to call us if the matter is urgent. Please advise us if you have specific property and access requirements e.g. vehicle deliveries, medical visits, planned work.

### What are we doing?

On Friday 13 March for one day, 7am - 7pm, subject to weather, we will potholing to locate services on Innes Road east of Philpotts Road.

### Traffic impacts

Lane shifts and shoulder closures will be in place.

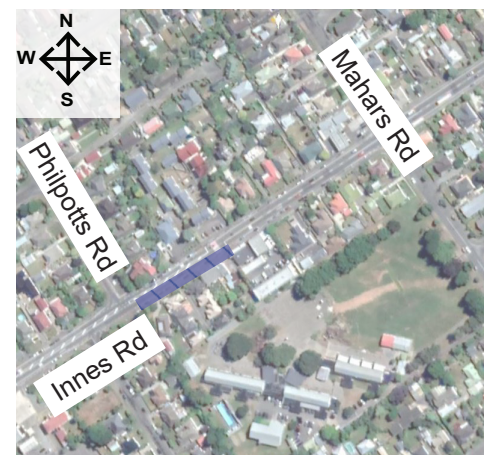
We will need to restrict some on-street parking, so will place no parking cones out before we start work. We will aim to minimise this as much as possible and remove cones where we can.

Please be on the lookout for changes in traffic management and follow the signs.

### Access to your driveway

We need to work in front of driveways in this area from time to time. If we are working in front of your driveway and you need access, please let our crew know and we will move our gear. We thank you for your patience.

### Where we'll be working:



### Sign up for email updates



If you would like to receive updates about this project, please email [cant.info@fultonhogan.com](mailto:cant.info@fultonhogan.com) with the subject 'St Albans Transport Projects'.

## Thanks for your patience as we work in your area

### Noise

There may be increased noise, dust and vibrations during work but it shouldn't impact on your power, water, gas or phone services.

### Safety

Safety is our biggest priority so please keep children and pets away from worksites.

### Bins

Please put your bins out as usual, before 6am on your collection day. Our crew will move and return them if needed.

### Other projects

Learn about the Council's work.  
[ccc.govt.nz/works](http://ccc.govt.nz/works)