

We're working in your area

Transport projects in St Albans, Edgware and Mairehau

ID: 20225

Wednesday 20 May 2020

We're making some major changes to the traffic management in your area

What	One way traffic
Where	Barbadoes Street, between Warrington Street and Bealey Ave
When	From Monday 25 May 2020 for approximately two months
Contact	Fulton Hogan on 0800 ROAD FH (Mon - Fri, 7.30am - 4.30pm) or email cant.info@fultonhogan.com . After business hours, please phone this number if the matter is urgent. Please advise us if you have specific property and access requirements e.g. vehicle deliveries, medical visits, planned work.

What are we doing?

Fulton Hogan is working at Warrington / Barbadoes and Edgware / Barbadoes intersections, while other contractors will be working down Barbadoes Street and within this area.

To speed up these works, **from Monday 25 May for approximately two months**, a one way will be in place on Barbadoes Street between Warrington Street and Bealey Ave.

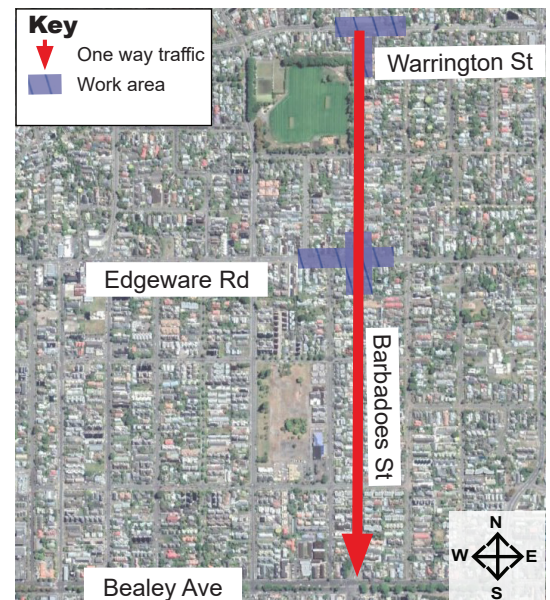
Traffic impacts

The current one way on Barbadoes Street between Warrington Street and Edward Ave will extend to Bealey Ave from Monday 25 May for approximately two months.

Traffic will only be able to head south (towards the city) using Barbadoes Street here, while northbound traffic will be detoured.

Please be on the lookout for changes to traffic management and follow the signs.

Please note we are doing our best to give you accurate timeframes of what to expect. Although we are confident in our programme, unforeseen issues can add to our overall duration, or alternatively we can find ways to speed up works.



Thanks for your patience as we work in your area

Noise

There may be increased noise, dust and vibrations during work but it shouldn't impact on your power, water, gas or phone services.

Safety

Safety is our biggest priority so please keep children and pets away from worksites.

Bins

Please put your bins out as usual, before 6am on your collection day. Our crew will move and return them if needed.

Other projects

Learn about the Council's work.

ccc.govt.nz/works

Please turn over for page 2

Transport projects in St Albans, Edgeware and Mairehau

What	Road closure
Where	Edgeware Road at Barbadoes Street intersection
When	From Monday 25 May 2020 for approximately one month
Contact	Fulton Hogan on 027 616 3929 (Mon - Fri, 7.30am - 4.30pm) or email cant.info@fultonhogan.com . After business hours, please phone this number if the matter is urgent. Please advise us if you have specific property and access requirements e.g. vehicle deliveries, medical visits, planned work.

What are we doing?

Edgeware Road will be closed at the intersection of Barbadoes Street from Monday 25 May for approximately one month to replace drainage, kerb and channel and traffic lights on the west side of this intersection.

Following the completion of these works, we expect to move this road closure to the other side of Edgeware Road.

Traffic impacts

Edgeware Road will be closed on the west side of Barbadoes Street from Monday 25 May for approximately one month.

Residents within this road closure on Edgeware Road will have access to their properties from the west side of this intersection. We expect to still maintain some parking here.

Access restrictions to properties

We will need to temporarily restrict driveway access to some properties on Edgeware Road. We will notify these properties before we block access to give you time to move your car if needed.

Pedestrian access to properties will be maintained at all times with the help of our friendly staff. We thank you for your patience and co-operation.



We appreciate that we are operating in unprecedented times and our works may be adding to an already stressful situation. We are working as fast as possible to complete the works.

Thanks for your patience as we work in your area

Noise

There may be increased noise, dust and vibrations during work but it shouldn't impact on your power, water, gas or phone services.

Safety

Safety is our biggest priority so please keep children and pets away from worksites.

Bins

Please put your bins out as usual, before 6am on your collection day. Our crew will move and return them if needed.

Other projects

Learn about the Council's work.
ccc.govt.nz/works