

# We're working in your area



UPDATE

ID: 20229  
Friday 29 May 2020

## Transport projects in St Albans, Edgeware and Mairehau

<b>What</b>	Night works
<b>Where</b>	Westminster Street, at Cranford Street intersection and west of Mersey Street
<b>When</b>	From Tuesday 2 June 2020 for two nights, subject to weather
<b>Contact</b>	Fulton Hogan on 0800 ROAD FH (Mon - Fri, 8am - 5pm) or email <a href="mailto:cant.info@fultonhogan.com">cant.info@fultonhogan.com</a> . After business hours, please call us if the matter is urgent. Please advise us if you have specific property and access requirements e.g. vehicle deliveries, medical visits, planned work.

### What are we doing?

From Tuesday 2 June for two nights, 7pm - 7am, we will be carrying out night works at Westminster / Cranford intersection and on Westminster Street west of Mersey Street intersection, so we can continue our drainage renewal works and turn off water to the area. This work may be carried out on nights following if weather is unfavourable.

### Night works

You will notice light, machinery and noise coming from the site. We will aim to carry out the noisiest works such as concrete cutting earlier in the night.

We know night works are disruptive so we apologise for this and will aim to work as quickly as possible. Night work is required so we can maintain water to businesses in the area during daytime/operating hours.

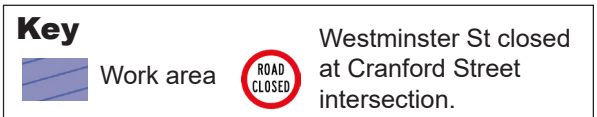
### Traffic impacts

Westminster Street will continue to be closed at both sides of Cranford Street intersection. Access to properties here will be maintained with the help of our friendly staff.

### Watermain shut off

Some properties will have their water turned off overnight. You can expect to receive a water shut off notice if your property will be affected.

## Thanks for your patience as we work in your area



### Noise

There may be increased noise, dust and vibrations during work but it shouldn't impact on your power, water, gas or phone services.

### Safety

Safety is our biggest priority so please keep children and pets away from worksites.

### Bins

Please put your bins out as usual, before 6am on your collection day. Our crew will move and return them if needed.

### Other projects

Learn about the Council's work.  
[ccc.govt.nz/works](http://ccc.govt.nz/works)