

# We're working in your area

ID: 20232

## Transport projects in St Albans, Edgware and Mairehau

<b>What</b>	We'll be working in the evenings
<b>Where</b>	Barbadoes Street south of Warrington Street intersection
<b>When</b>	Monday 22 June 2020 for approximately two months
<b>Contact</b>	Fulton Hogan on 0800 ROAD FH (Mon - Fri, 8am - 5pm) or email <a href="mailto:cant.info@fultonhogan.com">cant.info@fultonhogan.com</a> . After business hours, please phone us if the matter is urgent. Please advise us if you have specific property and access requirements e.g. vehicle deliveries, medical visits, planned work.

### What are we doing?

From Monday 22 June for approximately two months, we will be carrying out works on Barbadoes Street south of Warrington Street intersection until 11pm on weekdays.

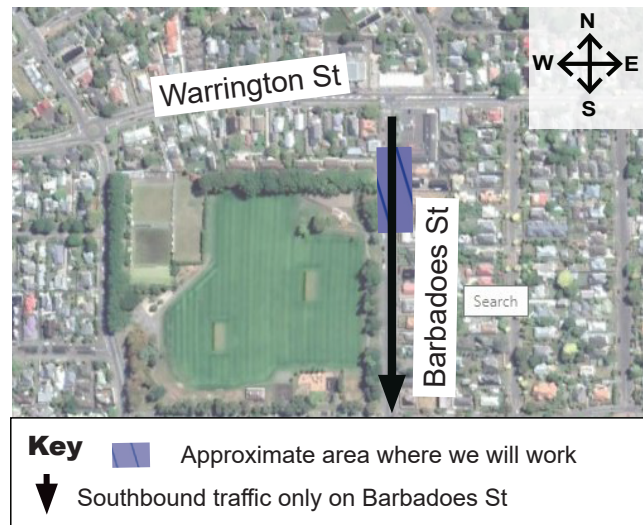
Works at this intersection will continue to be carried out between 7am - 7pm as usual.

### Evening work

We will be working to 11pm on Barbadoes Street near this intersection.

You will notice light and noise coming from this site. We will aim to complete loud activities such as concrete cutting and hydroexcavation by 9pm each night.

We know evening shift can be disruptive so we apologise for this. We aim to work as quickly as possible and we appreciate your continued patience during our works.



**OPEN**  
FOR YOUR  
BUSINESS

*We ask that during the construction of the transport projects in St Albans, Edgware and Mairehau, you continue to support your local businesses.*

## Thanks for your patience as we work in your area



### Noise

There may be increased noise, dust and vibrations during work but it shouldn't impact on your power, water, gas or phone services.



### Safety

Safety is our biggest priority so please keep children and pets away from worksites.



### Bins

Please put your bins out as usual, before 6am on your collection day. Our crew will move and return them if needed.



### Other projects

Learn about the Council's work.

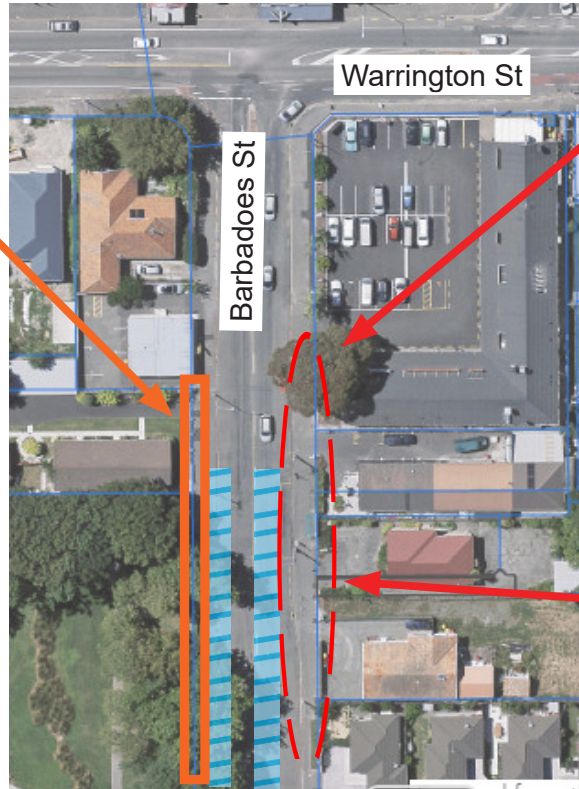
[ccc.govt.nz/works](http://ccc.govt.nz/works)

## Where we will carry out evening shift:

### Footpath prep

From Monday 22 June for approximately one month (1pm - 11pm weekdays).

- Excavator and truck will be on site.



### Drainage

From Monday 22 June for approximately one month (1pm - 11pm weekdays).

- Digger and truck will be on site. At times there will also be delivery trucks and hydrovacs.
- When we backfill part of this site we can open it up for more parking.

### Traffic impacts

Traffic will continue to be southbound only on Barbadoes Street from Warrington Street to Bealey Avenue.

### Kerb and channel, parking bay and footpath

Starts when drainage is complete for approximately one month (1pm - 11pm weekdays).

- Digger and truck on site.

### Car parks

Between 1pm and 11pm on weekdays, there will be **no** on-street parking on both sides of the road around 656 Barbadoes Street (shown in blue).

**We expect to open up some parking on one side of the road outside of our working hours** (11pm - 1pm and on weekends). We would greatly appreciate you only park here during these hours so we can maintain these parks for businesses and residents as much as possible.

If cars park here when we need to work between 1pm - 11pm weekdays we will need to remove these car parks at all times.

### Access restrictions to your property

We will need to temporarily restrict access to some properties on Barbadoes Street. We will notify these properties before we block access to give you time to move your car if needed.

Affected properties will have driveway access reinstated with plates until we complete the works. Pedestrian access to properties will be maintained at all times with the help of our friendly staff.

We thank you for your patience and co-operation.

## Thanks for your patience as we work in your area



### Noise

There may be increased noise, dust and vibrations during work but it shouldn't impact on your power, water, gas or phone services.



### Safety

Safety is our biggest priority so please keep children and pets away from worksites.



### Bins

Please put your bins out as usual, before 6am on your collection day. Our crew will move and return them if needed.



### Other projects

Learn about the Council's work.

[ccc.govt.nz/works](http://ccc.govt.nz/works)